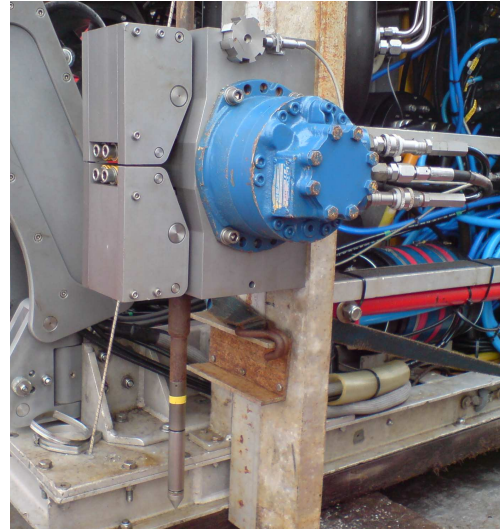




GeoMarine is an innovative company focused on supporting offshore operations. We know that a key aspect of success and risk management, is understanding seabed conditions. Our innovative approach is resulting a new breed of soil testing equipment with our first tool being geoROV.

geoROV mounts quickly and simply onto a conventional workclass ROV, which provides all power and communications. No specialist personnel are required offshore and GeoMarine provides 24hour support for results and re-evaluation of work options.

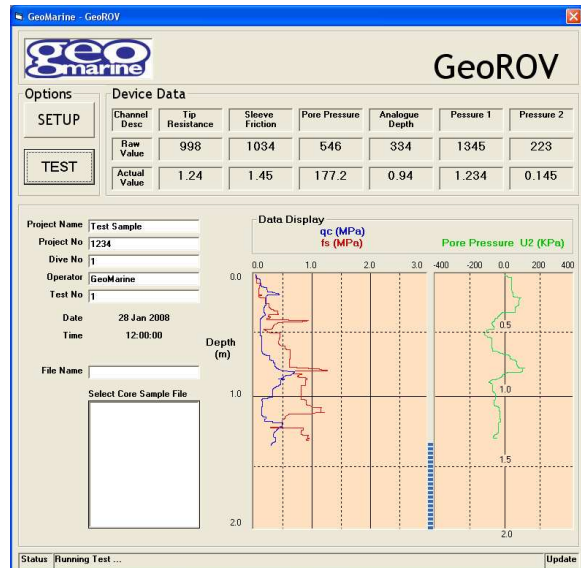


geoROV is based around the proven concept of the Cone Penetration Test (CPT), and has been specifically developed to easily interface with a standard work class 100HP/150HP ROV. In addition to conventional CPT and T bar testing, GeoMarine is developing a simple, patented technique to test soil placed as backfill over a pipeline. This technology is currently being tested and proven at a leading UK University and will be available in the near future.

GeoMarine's extensive experience of offshore geotechnical engineering, pipelay and trenching operations enables us to assist planning of the works and project support during operations. geoROV provides an opportunity to far exceed existing data quality on deep water very soft clays. In addition, GeoMarine's backfill testing tool will provide a unique and cost effective method for minimising any unnecessary works to achieve pipeline engineering objectives.

Specification

- Mounts readily in place of an ROV manipulator arm or on ROV structure;
- Hydraulic and electric power (24V) provided by ROV;
- Single 3 wire RS232 channel used for comms;
- Compact frame (360mm high x 300mm length x 340mm width);
- 3000m water depth capability
- Training provided as required;
- 24hour telephone and email support;
- Full data interpretation provided by email;
- Push / pull force of up to 1500kg;
- Suction pads for additional reaction available, if required;
- Total package weight in air 55kg, 40kg submerged;
- Air freightable in two packing cases, total weight approx 100kg;
- *Specification subject to project specific requirements.*



Contact:
 email: info@geomarine.co.uk
 Tel: +44 (0) 191 233 6335
 Web: www.geomarine.co.uk